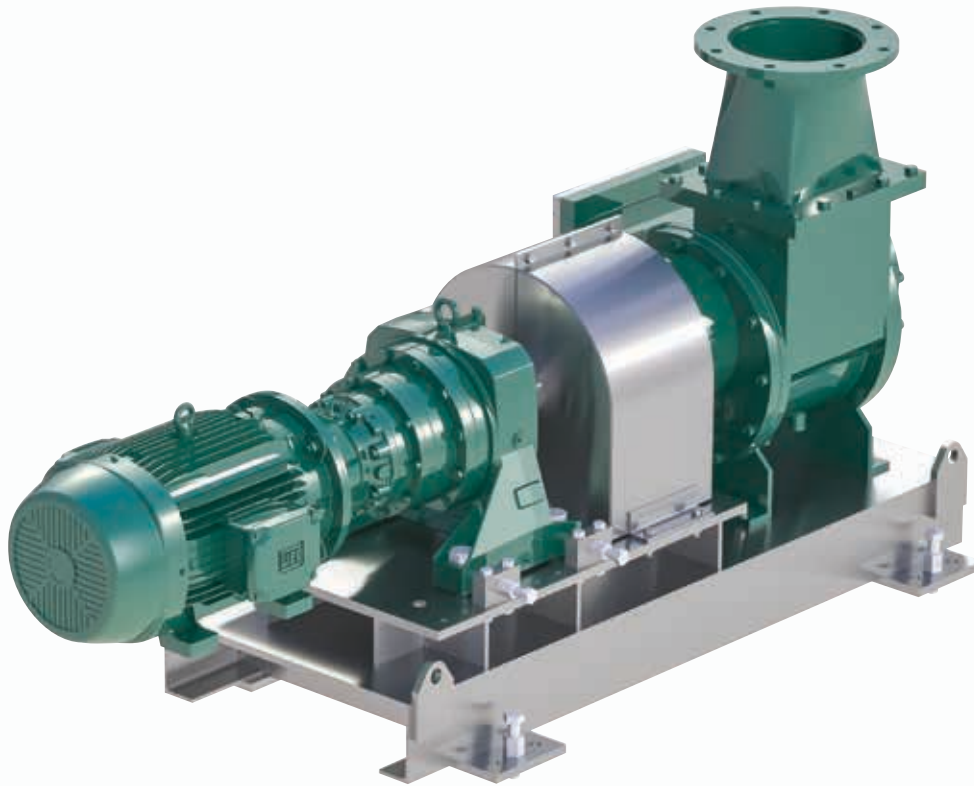


RAW MATERIAL PUMP



RENDETECH



The **JS Lamella Pump** by **JS Proputec A/S** is designed to pump pre-broken raw materials from meat processing plants. It also comfortably pumps fish and poultry products. The pump has few moving parts and a low rotation speed – typically, 1 rpm equates to 1 tonne of raw material pumping capacity. The raw material is pumped in an enclosed pipe to minimise odour, and we can configure the pump system to have minimal operational labour requirements.

LOWER RUNNING COSTS

No added water is required to pump the raw material, although it can pump water if required. The low rotation speed means less wear and tear on the pump and low energy consumption compared with many alternative raw material conveying systems.

HIGHER CAPACITY

Suitable for most raw material conveying system requirements within Australasia. For example, 1–30 tonnes per hour is the nominal capacity range with the 350 model pump.

THE TOUGHEST JOBS

High-quality steel makes the **JS Lamella Pump** exceptionally strong and hard-wearing. All wearing parts

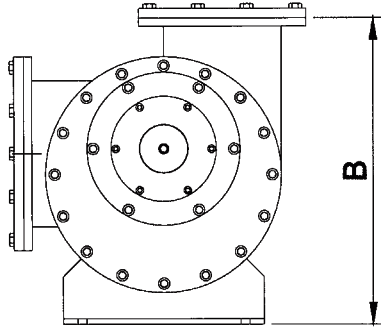
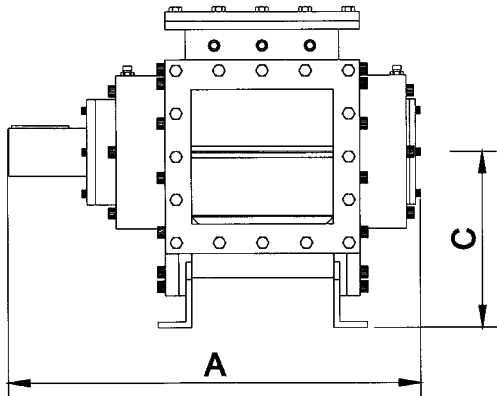
are replaceable, and mechanical seals ensure a long life for the bearings and wear rings.

REDUCES ODOURS

The pump and pipeline are much easier to clean than screw conveyors. The enclosed piping system means the raw material isn't open to the environment, therefore reducing odour issues.

HEALTH & SAFETY

By not using compressed air to propel the raw material, aerosols containing zoonotic diseases are not discharged into the atmosphere.



	150/45	200/60	250/70	350/90	400/115	450/140
TECHNICAL SPECIFICATION						
Capacity (m³/h)	10	10-20	20-30	30-70	70-140	140-200
Filling	0.8-0.9	0.8-0.9	0.8-0.9	0.8-0.9	0.8-0.9	0.8-0.9
Maximum pressure (bar)	10	10	10	10	10	10
Pipe length (m)	1-150	1-150	1-150	1-150	1-150	1-150
Pipe connections (Ø)	100	140	200	250	300	350
PRODUCT DIMENSIONS						
Dimension A (mm)	530	629	670	860	964	969
Dimension B (mm)	375	468	500	640	801	785
Dimension C, centre height (mm)	221	283	304	367	445	495
FLANGE INLET						
Inlet outside (mm)	186 x 200	236 x 240	306 x 260	405 x 405	460 x 444	534 x 484
Inlet inside (mm)	106 x 120	156 x 160	206 x 160	296 x 281	336 x 320	384 x 334
Outlet outside (mm)	186 x 200	236 x 240	306 x 260	405 x 350	460 x 404	534 x 460
Outlet inside (mm)	106 x 120	156 x 180	206 x 160	296 x 223	336 x 280	384 x 310
MATERIAL						
Hardened steel	•	•	•	•	•	•
Mild steel	•	•	•	•	•	•
WEIGHT						
(kg)	110	220	260	380	860	1,050

OPTIONS
Feed hoppers
Pipelines
Divert valves

YOUR
PROCESS
PARTNER

We are specialists in process and storage solutions, providing the products and technical expertise to get the best from your plant. For more information call for a no obligation chat about your processing needs.

E enquiries@rendertech.co.nz
T +64 9 634 5375

Rendertech Ltd
8 Rakino Way, Mount Wellington
Auckland 1060, New Zealand
PO Box 12629, Penrose,
Auckland 1642, New Zealand

RENDETECH.CO.NZ