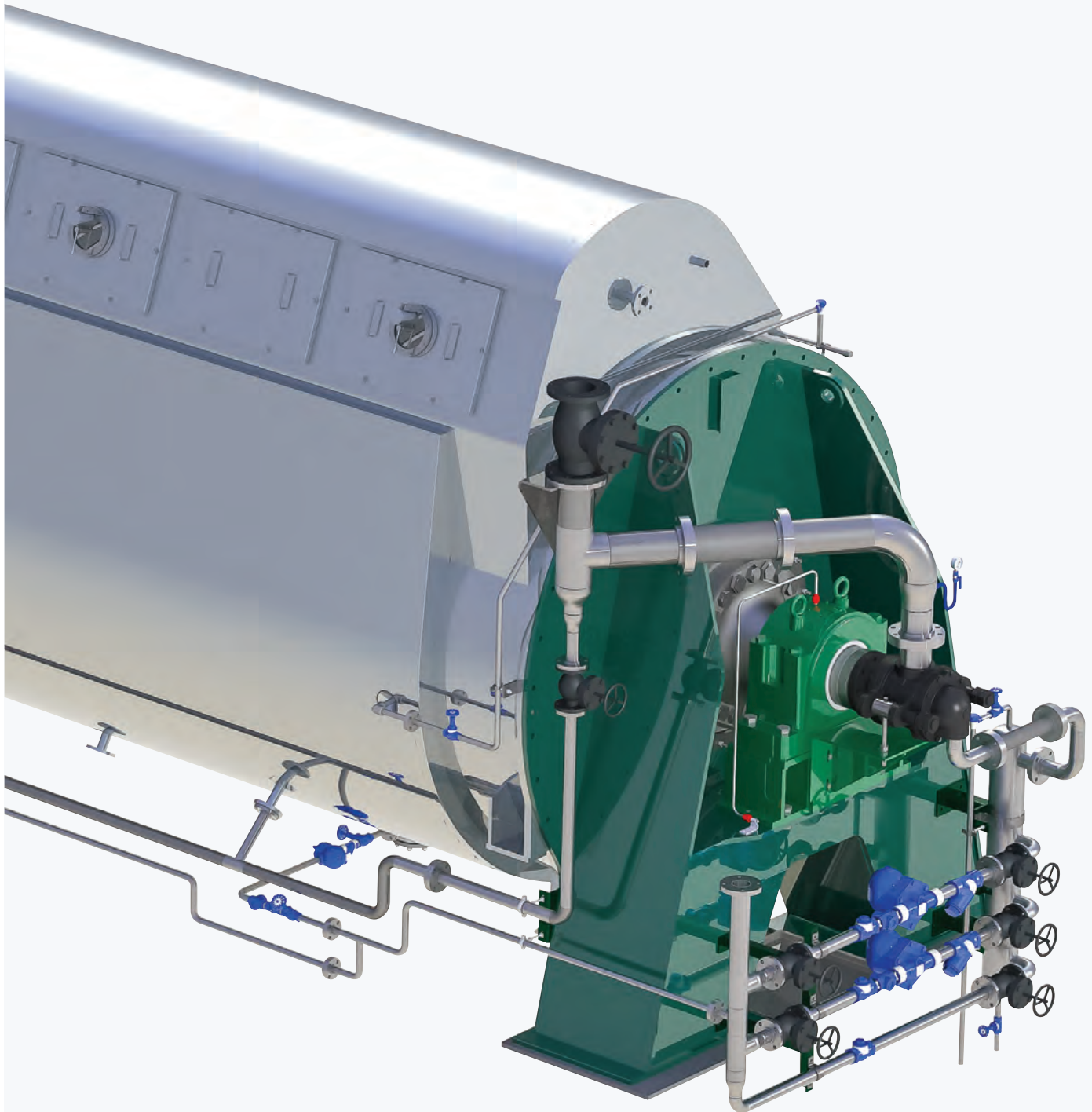


RENDERING & PROTEIN RECOVERY

CONTACT DRIER

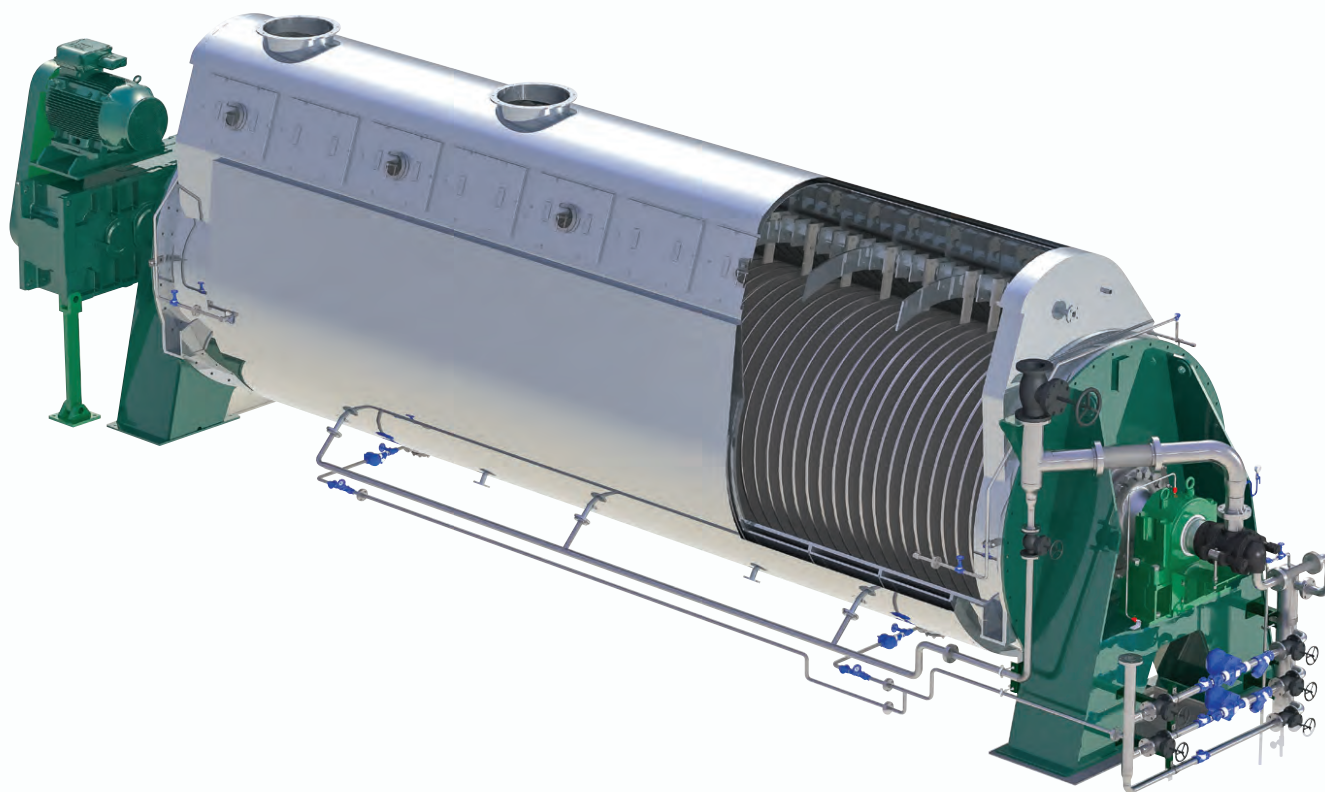


RENDETECH





CONTACT DRIER

**RENDETECH**

The Rendertech Contact Drier (CD) is an indirect steam-heated, continuous drier for drying a variety of granular and fluid products. The construction consists of a horizontal shell with disc rotor for heating and transport of the product. The rotor comprises a tubular shaft carrying a number of steam-heated hollow discs. Fitted to the edge of the discs are agitator blades to transport the material along the drier. The design provides a large heating area in a compact footprint.

SIMPLE TO OPERATE AND MAINTAIN

Occasional monitoring by operators is all that is required.

LOW MAINTENANCE COSTS

Simple design and robust construction ensures minimum maintenance requirements: most tasks can be completed between production runs. The CD utilises industry-standard proprietary components, and removable covers provide convenient access for inspection.

HANDLES DIFFICULT MATERIALS

The disc construction allows effective processing of a variety of materials – from free-flowing granular to sticky – with the proven tapered disc design minimising product hold-ups. Disc driers produce a consistent finished product.

REDUCED ENERGY CONSUMPTION

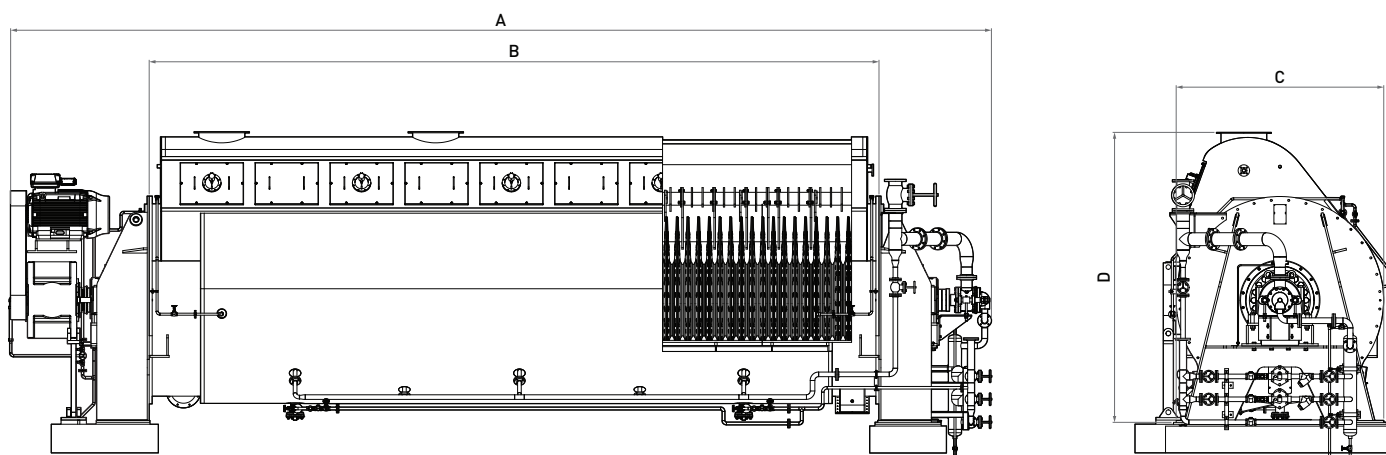
The large heating surface area in a compact machine means high thermal efficiency with reduced heat loss. When used with a waste heat evaporator, waste energy can be recovered for hot water generation, and lost product can be recovered back into the process.

DESIGNED TO SUIT YOUR REQUIREMENTS

Each machine is specified to the user's requirements. Stainless steel can be utilised for increased operation life, and 6 bar or 8 bar steam pressure designs are both available.

ODOUR CONTROL

The disc drier is fully sealed, so that all odours and vapours are captured. Vapour from the drier exhaust is predominantly water vapour with a small amount of air, so volumes to condense and deodorise are small.



	CD20	CD40 (J)	CD75 (J)	CD120 (J)	CD160 (J)	CD200 (J)	CD260 (J)	CD325 (J)	CD400 (J)	CD550 (J)
TECHNICAL SPECIFICATION										
Heating surface (m ²)	23	40	75	120	160	198	266	320	398	555
Heating surface, jacketed Drier (J) (m ²)		51	93	141	190	232	310	376	454	633
Drive motor (kW)	11	22	30	45	55	75	90	110	150	185
PRODUCT DIMENSIONS										
Dimension A (mm)	5,300	5,910	6,920	7,100	9,000	10,400	11,850	13,950	13,000	13,840
Dimension B (mm)	3,050	3,915	5,035	4,420	6,100	7,500	8,710	10,800	9,550	10,530
Dimension C (mm)	1,350	1,500	1,700	2,140	2,140	2,140	2,400	2,480	2,720	2,960
Dimension D (mm)	1,880	2,150	2,500	2,900	2,900	2,900	3,300	3,300	3,800	4,000
WEIGHT										
Shipping weight (kg)	5,200	9,500	17,000	25,000	34,000	40,000	59,000	68,500	80,000	95,000
Shipping weight, jacketed Drier (J) (kg)		11,500	20,000	29,000	39,000	46,000	67,000	72,000	90,000	105,000

OPTIONS

Carbon steel or stainless steel or combination of both

Combination of thicknesses of materials

Platforms and structures

Control system

Gearbox condition monitoring

Illuminated viewing ports

Top or side entry

Heated jacket

YOUR PROCESS PARTNER

We are specialists in process and storage solutions, providing the products and technical expertise to get the best from your plant. For more information call for a no obligation chat about your processing needs.

E enquiries@rendertech.co.nz
T +64 9 634 5375

Rendertech Ltd
2/110 Mays Road, Onehunga,
Auckland 1061, New Zealand
PO Box 12629, Penrose,
Auckland 1642, New Zealand

RENDETECH.CO.NZ